



Antimony removal from wastewater by sulfate-reducing bacteria in a bench-scale upflow anaerobic packed-bed reactor

Jingjing Chen^{1,2} · Guoping Zhang¹ · Chao Ma^{1,2} · Dongli Li^{1,2}

Received: 28 August 2019 / Revised: 6 October 2019 / Accepted: 14 November 2019
© Science Press and Institute of Geochemistry, CAS and Springer-Verlag GmbH Germany, part of Springer Nature 2019

Abstract The objective of this research was to study the precipitation of Sb and the stability of Sb_2S_3 during treatment of synthetic Sb(V) wastewater by sulfate-reducing bacteria (SRB). We investigated the transformation and precipitation of Sb, as well as the re-dissolution of Sb_2S_3 under different pH and carbon sources. The results showed that the precipitation of aqueous Sb and the re-dissolution of Sb_2S_3 depend on the conversion between Sb(III)-S(-II) complexes and Sb_2S_3 precipitates. These processes were highly pH-dependent, and a decrease in pH enhanced reduction of Sb(V) and precipitation of Sb_2S_3 were observed. The newly formed Sb_2S_3 was found to be unstable and could re-dissolve through complexation with H_2S due to the increase in pH. When pH decreased to approximately 6.5, Sb was almost completely transformed into Sb_2S_3 precipitates, and the Sb_2S_3 precipitates were relatively stable. Compared with lactate as a carbon source, ethanol resulted in a comparable H_2S yield and a relatively low pH and was, therefore, more conducive to the removal of Sb(V). The results of this study suggest that when removing Sb(V) in wastewater by SRB, it is important to control the pH at a relatively low level.

Keywords Antimony · Removal · Mechanism · Wastewater · Sulfate-reducing bacteria

1 Introduction

Antimony (Sb) is a toxic element to living organisms and can accumulate in animals and plants. It may even cause cancer after entering the human body. Therefore, Sb is listed as a priority pollutant by the US Environmental Protection Agency and the European Union (Filella et al. 2002a; He 2007).

Sb has wide industrial applications, such as in flame retardants, batteries, plastics, paints, glass, and alloys, leading to a huge demand for Sb resources in the world (Filella et al. 2002a; Mariussen et al. 2012). However, severe Sb pollution can occur during the exploitation of Sb minerals (Wilson et al. 2010; Wu et al. 2011). This situation is particularly prominent in China, where approximately 84% of the Sb in the world is produced (He et al. 2012). In world's largest antimony mine, Xikuangshan, in Hunan Province, the Sb concentration in the percolating water of a tailing pile was as high as 38.3 mg L^{-1} (Guo et al. 2018). In the Banpo Sb mine in Dushan County, Guizhou Province, China, the Sb concentration in the pore water of mill tailing slurry and adit water were as high as 7.9 and 1.3 mg L^{-1} , respectively. The introduction of such Sb-polluted wastewaters to the surrounding water bodies and soil can degrade environmental quality and damage the ecosystem (Flynn et al. 2003; He 2007).

Currently, traditional physicochemical methods (e.g., precipitation and adsorption) are used in the treatment of Sb-containing wastewaters (Guo et al. 2009; Kang et al. 2003; Lee et al. 2018). However, these methods often require high costs and high energy consumption (Wakao et al. 1979). The biological sulfide precipitation method uses sulfate-reducing bacteria (SRB) to reduce SO_4^{2-} and produce H_2S . Heavy metals can be removed when they form sulfide precipitates with H_2S . Due to the advantages

✉ Guoping Zhang
zhangguoping@vip.gyig.ac.cn

¹ State Key Laboratory of Environmental Geochemistry, Institute of Geochemistry, Chinese Academy of Sciences, Guiyang 550081, China

² University of Chinese Academy of Sciences, Beijing 100049, China

of low costs and the high removal of heavy metals, this method has been widely investigated in the treatment of wastewaters containing Pb(II), Zn(II), Cu(II), Ni(II), and Fe(II) (Jong and Parry 2003; Alvarez et al. 2007; Kaksonen et al. 2011; Kieu et al. 2011). As a metalloid, Sb is different from heavy metals in many aspects. In the surface water environment, Sb generally exists as $\text{Sb}(\text{OH})_6^-$ (Sb(V)) (Filella et al. 2009; Wilson et al. 2010), which needs to be reduced to H_3SbO_3 (Sb(III)) before forming a sulfide precipitate (stibnite, Sb_2S_3). In addition, Sb can form Sb(III)-S(-II) complexes (e.g., $\text{Sb}_2\text{S}_4^{2-}$ and HSb_2S_4^-) in sulfidewater systems (Krupp 1988; Filella et al. 2002b; Planer-Friedrich and Scheinost 2011). These characteristics may make the behavior of Sb in treatment by SRB complicated. Recently, some batch-experiment studies have demonstrated the feasibility of Sb removal by SRB and proposed that Sb(V) in wastewater is first reduced to Sb(III) and subsequently precipitated as Sb_2S_3 (Wang et al. 2013; Zhang et al. 2016; Liu et al. 2018). However, the transformation of Sb species in a sulfidic system may not only result in the formation of Sb_2S_3 precipitates but also significantly affect the stability of Sb_2S_3 through complexation. So far, these considerations have not been well addressed. Lactate has been widely applied in lab-scale experiments, but its large-scale application may be limited due to its high operating costs (Kaksonen et al. 2003; Pagnanelli et al. 2012). Ethanol is low in cost compared with lactate (Zhang and Wang 2013). Therefore, a feasibility study on ethanol will help decrease the cost. Moreover, the effect of the products of carbon source oxidation by SRB on Sb removal has not been extensively studied.

In this study, Sb(V) wastewater was treated by SRB in an upflow bioreactor to examine the transformation of Sb species, with a particular focus on the formation and redissolution of the Sb_2S_3 precipitates triggered by changes in pH. In addition, the feasibility of replacing lactate with the more economical ethanol as the carbon source was investigated.

2 Materials and methods

High-purity deionized water (HPW) (resistivity: 18.2 M Ω cm) was prepared with a Milli-Q system (Millipore, Bedford, USA) and was used throughout the experiments. Potassium hexahydroxoantimonate ($\text{KSb}(\text{OH})_6$, 99% purity) was purchased from Fluka Inc., Steinheim, Germany. All other chemicals were analytical grade.

The medium used for bacterial growth was modified Postgate's medium B (Postgate 1984) (in g L $^{-1}$): K_2HPO_4 0.5, NH_4Cl 1.0, $\text{CaCl}_2 \cdot 6\text{H}_2\text{O}$ 0.1, $\text{MgSO}_4 \cdot 7\text{H}_2\text{O}$ 2.0, Na_2SO_4 1.0, sodium lactate 3.5, yeast extract 1.0, ascorbic acid

0.1. When ethanol was used as the carbon source, the lactate in the medium was replaced by an equimolar amount of ethanol.

Synthetic Sb(V) wastewater was used in the treatment experiment. Given to the Sb concentration (1.3 and 7.9 mg L $^{-1}$) in wastewater from antimony mining areas in China (see Introduction), we set the Sb concentration of the synthetic wastewater to 5 mg L $^{-1}$. $\text{KSb}(\text{OH})_6$ was first used to prepare a 500 mg L $^{-1}$ Sb(V) stock solution. Then, an appropriate amount of the stock solution was added into the modified Postgate's medium B, and the pH was adjusted with 2 M HCl or NaOH to obtain synthetic wastewater containing 5 mg L $^{-1}$ Sb(V) with different pH values. When preparing the synthetic wastewater, yeast extract and ascorbic acid were not included in the modified Postgate's B medium to avoid potential reduction by these components.

2.1 Reactor

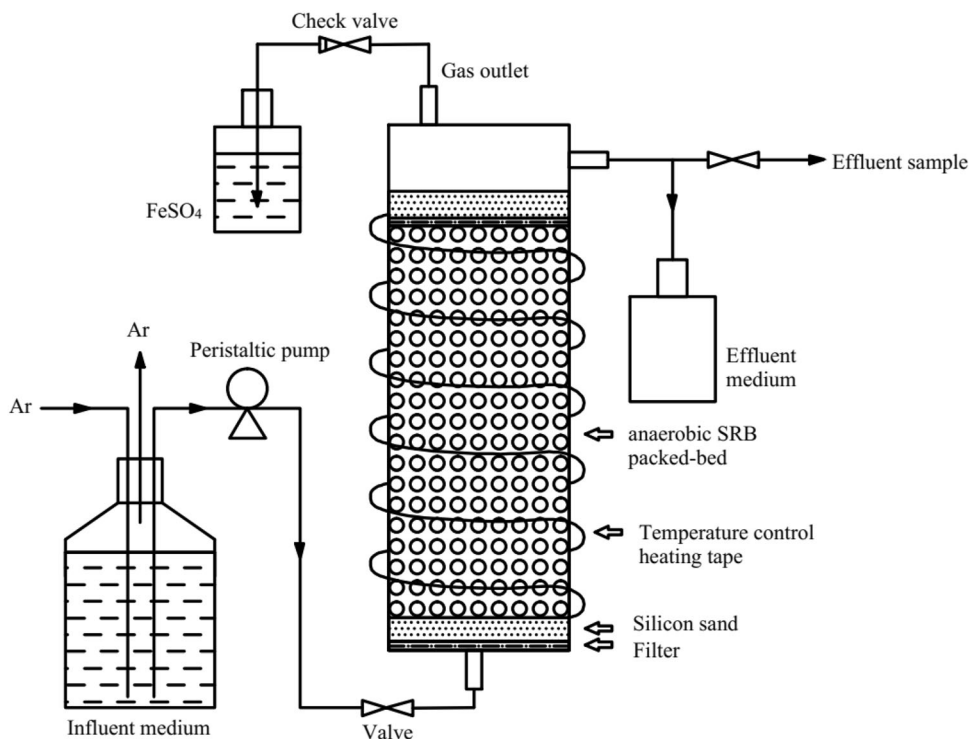
The bioreactor was a closed cylinder made of polyvinyl chloride (PVC) with an inner diameter of 100 mm, a height of 300 mm and a volume of 2.35 L (working volume: 1.1 L) (Fig. 1). An inlet and an outlet were located at the bottom and the top, respectively. After the bottom was covered with a layer (thickness: ca. 5 mm) of water-filtering quartz cotton, the reactor was filled with ceramsite (size: 2–3 mm; porosity: 0.5) as a biofilm carrier (height: 200 mm). The ceramsite was rinsed with HPW before use.

2.2 Experimental procedures

The bacteria used in the experiments were an SRB consortium previously enriched in the laboratory. The consortium contained *Clostridium sp.*, *Escherichia coli*, and *Ruminococcaceae*. Among these bacteria, *Clostridium sp.* has been previously proven to be able to reduce sulfate (Liu et al. 2018).

First, 1000 mL of modified Postgate's medium B was added to the bioreactor. The air in the remaining space of the reactor was purged with nitrogen (99.9% purity) for 0.5 h. The reactor was heated with electric heating tape, and the temperature of the internal liquid was controlled at 30 ± 2 °C (this temperature was maintained during the subsequent Sb(V) wastewater treatment and the precipitate leaching experiment). Next, a total of 100 mL of the SRB consortium culture was injected into the medium in the reactor and mixed thoroughly; then, the reactor was closed, and the preincubation of SRB started (day 0). Three days later, the modified Postgate's medium B was pumped into the reactor from the bottom inlet (flow rate: 0.76 mL min $^{-1}$, hydraulic residence time: 24 h). Between days 1 and 30, a small amount of FeSO_4 (0.1 mg L $^{-1}$) was

Fig. 1 A schematic diagram of the upflow anaerobic packed bed reactor setup used in this study



added to the influent solution because Fe(II) can accelerate microbial growth and promote biofilm formation (Zhang et al. 2008). Between days 30 and 45, a microbial coating appeared on the ceramsite surface, and the odor of H₂S was obvious in the effluent. In this period, the redox potential (Eh) of the solution in the reactor was -281.6 ± 6.5 mV, and the H₂S concentration was 143.9 ± 2.1 mg L⁻¹, indicating that the SRB grew well and the solution was in a strong reducing state.

The treatment of Sb(V) wastewater started when the influent solution was replaced with synthetic Sb(V) wastewater on day 45. Two carbon sources, lactate and ethanol, were used in the treatment, and the influent pH was 7, 5, 3, and 9 at different periods (Fig. 2). The treatment experiment ended on day 198.

After the treatment experiment, an Sb-free medium solution (with ethanol as the carbon source) was quickly pumped (2.28 mL min⁻¹) into the reactor to rapidly reduce the residual aqueous Sb in the reactor. The total Sb (Sb(T)) concentration in the effluent after one day was less than 0.22 mg L⁻¹. On day 200, the experiment examining the leaching of the precipitates in the reactor started, and the influent flow was adjusted to 0.76 mL min⁻¹. The influent pH was set to neutral (pH 7), acidic (pH 3), and alkaline (pH 9 and 10) in different periods (Fig. 2). The leaching experiment ended on day 265.

2.3 Sample collection and pretreatment

For both the Sb(V) wastewater treatment experiment and the precipitate-leaching experiment, effluent was sampled at the outlet of the reactor on the first, second and third day after switching to a new influent pH (or carbon source) and every 2 days thereafter until the influent pH (or carbon source) was changed. Ultimately, 92 and 35 samples were collected during the Sb(V) wastewater treatment experiment and the precipitate-leaching experiment, respectively. After sampling, the effluent was introduced into a ferrous sulfate solution to prevent secondary pollution caused by sulfide. Each effluent sample was divided into two portions, one of which was syringe-filtered (0.45 - μ m pore-size nitrocellulose filter). The unfiltered portion was immediately used for measurement of pH, Eh, and alkalinity. The filtered portion was further divided into sub-portions for the determination of dissolved sulfate, dissolved sulfide, Sb(T), and Sb(III).

During the treatment of Sb(V) wastewater, a small fraction of the precipitates were collected from the bottom of the bioreactor under a flow of nitrogen, gently washed with nitrogen-purged HPW three times, and then centrifuged at $10,000$ rpm for 10 min in a benchtop centrifuge. The precipitates were freeze-dried for 24 h in a vacuum freeze dryer (Model FD-18, Detianyou Technologies, Beijing, China) and then stored in a glove box under a nitrogen atmosphere prior to use.

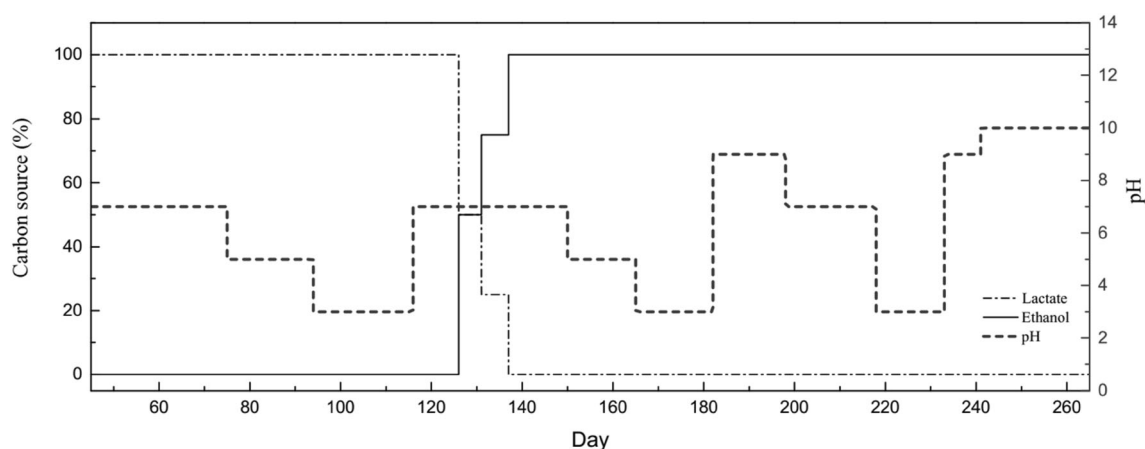


Fig. 2 Variations in the pH and carbon source of the influent solution in Sb(V) wastewater treatment and the precipitate leaching experiment (The carbon source is expressed as a percentage; 100% carbon source = 0.03 mol L⁻¹)

The precipitate samples were subjected to the sequential chemical extraction of Sb following a method (Table 1) modified from Tessier et al. (1979) and Fu et al. (2016). The extraction was carried out in an anaerobic glove box.

2.4 Analyses

The pH and Eh of the effluent samples were immediately measured with a Denver UB-7 pH meter and a redox potential meter (TOA-DKK, Japan), respectively. Total alkalinity was analyzed by titrating unfiltered samples with 0.02 M HCl to pH 4.5 according to the standard method SFS-EN ISO 9963-1 (SFS 1996). The dissolved sulfide concentration was measured immediately after filtration using the methylene blue method (Greenberg et al. 1992) with a UV-Vis spectrophotometer. Dissolved sulfate was measured employing the turbidimetric method using a standard method, in which the sulfate is precipitated with barium chloride to form a suspension of barium sulfate (APHA 1998). The concentrations of Sb(T) were analyzed using a method modified from Zhang et al. (2016). Ascorbic acid (10 g L⁻¹) and thiourea (10 g L⁻¹) were mixed with the collected samples to reduce pentavalent Sb to trivalent species and to mask the interference of metals, and then the concentration of Sb(T) was determined by hydride generation-atomic fluorescence spectrometry (HG-

AFS) (AFS-2202E, Haiguang Instruments Corp., Beijing, China). For the analysis of Sb(III), citric acid (1 g L⁻¹) was added to mask Sb(V) signal (Fuentes et al. 2003), and the concentration of Sb(III) was then determined. The Sb(V) concentration was calculated as the difference between the Sb(T) and Sb(III) concentrations.

The morphology and chemical composition of the precipitates were examined by scanning electron microscopy coupled with an energy dispersive spectrometer (SEM-EDS, model JSM-6460LV, JEOL, Japan). The mineralogical composition of the precipitates was analyzed by X-ray diffraction (XRD) (D-MAX 2200, Rigaku Co., Japan).

3 Results and discussion

3.1 Variation in Eh, pH, alkalinity, and sulfide

The Eh, alkalinity (expressed as HCO₃⁻ concentration), and pH of the effluent from the Sb(V) wastewater treatment experiment (days 45–198) are shown in Fig. 3. The Eh ranged from -191.8 to -244 mV (Fig. 3a), indicating stable reducing conditions.

The alkalinity and pH of the effluents in the treatment stages with different influent pH values are shown in Table 2. When the influent pH was the same, the use of

Table 1 Procedure of the sequential chemical extraction of the precipitates

Step	Fraction	Extraction procedure (1.0 g sample)
I	Water-soluble	50 mL HPW, shaken for 1 h
II	Exchangeable	1 M MgCl ₂ , pH 8.2, shaken for 2 h
III	Carbonates	1 M NaOAC/HOAC, pH 5.0, shaken for 1 h
IV	Amorphous sulfides	35% H ₂ O ₂ , heated in water bath (80 °C) for 1 h
V	Crystalline sulfides	KClO ₃ and HCl, followed by 4 M HNO ₃ boiling
VI	Residual	HF and HNO ₃ digestion

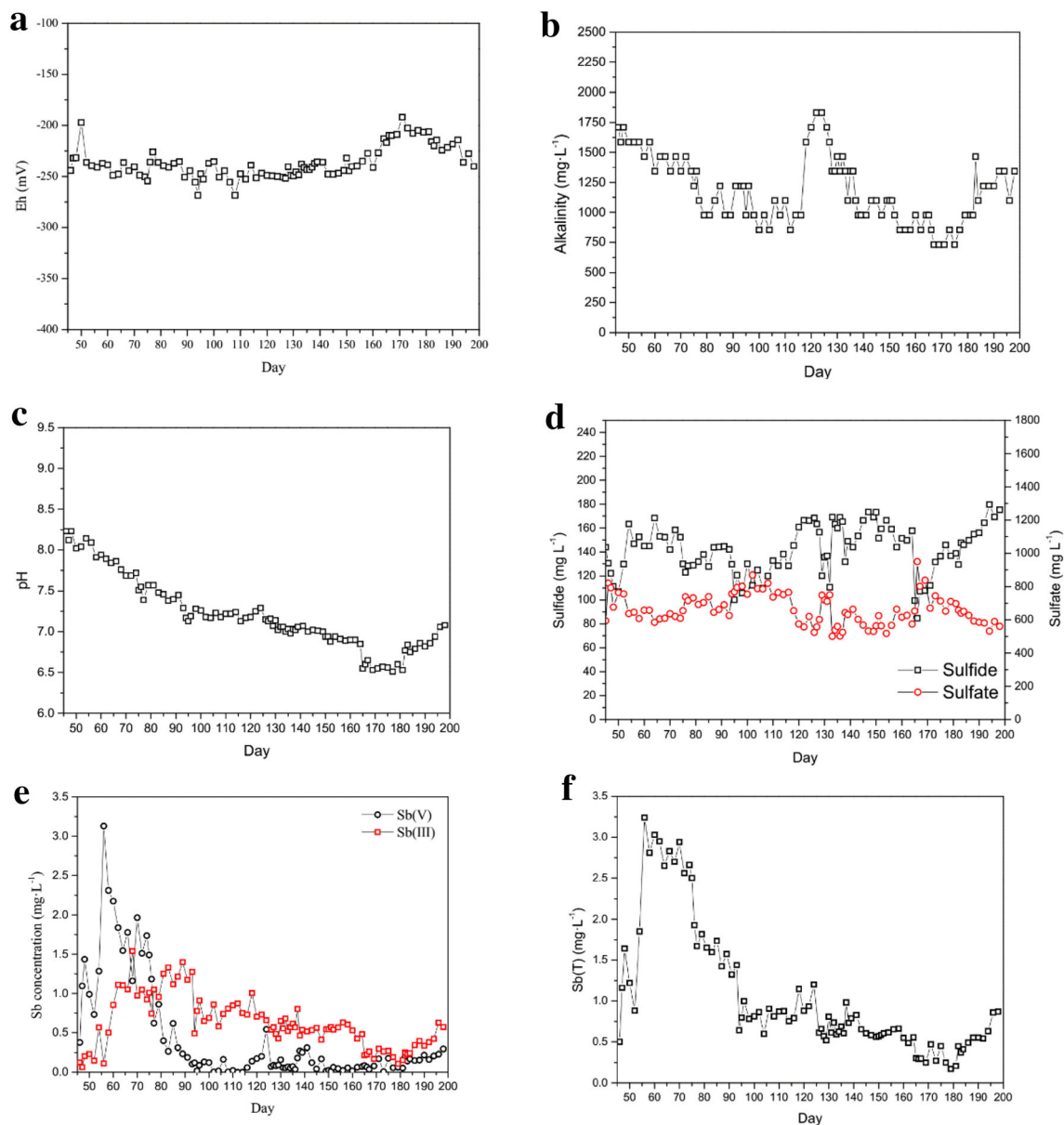


Fig. 3 Variations in parameters in Sb(V) wastewater treatment [a Eh; b alkalinity; c pH; d aqueous sulfide and sulfate; e Sb(V) and Sb(III); f Sb(T)]

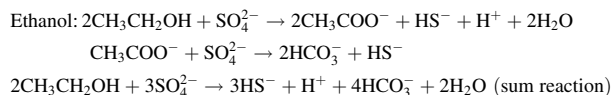
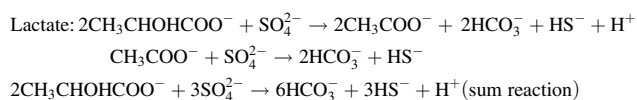
Table 2 HCO_3^- concentrations and pH values in different stages

Influent pH	Effluent HCO_3^- (mg L^{-1})		Effluent pH	
	Lactate	Ethanol	Lactate	Ethanol
7.0	1342–1708 (1502)	976–1098 (1057)	8.23–7.69 (7.96)	7–7.07 (7.04)
5.0	976–1342 (1120)	854–1098 (948)	7.24–7.53 (7.39)	6.89–6.94 (6.92)
3.0	854–1120 (1004)	732–976 (841)	7.13–7.28 (7.21)	6.51–6.65 (6.58)

Results presented in parenthesis are expressed as average

ethanol as the carbon source resulted in a lower HCO_3^- concentration and a lower pH in the treatment solution than the use of lactate. This difference was possibly related to

the oxidation mechanisms of the two carbon sources (Kaksonen et al. 2003; Pagnanelli et al. 2012).



HCO_3^- is produced in two steps in the oxidation of lactate but only produced in one step in the oxidation of ethanol. Thus, the production of HCO_3^- in the oxidation of lactate is theoretically 1.5-fold that in the oxidation of an equivalent amount of ethanol. The production of HCO_3^- was assessed based on the HCO_3^- concentration when the influent was neutral because HCO_3^- could not react with acid in the influent. Regarding the oxidation of lactate and ethanol when the influent pH was 7, the average HCO_3^- production was 1502 and 1057 mg L^{-1} (Table 2), respectively, and a molar ratio of 1.42 was obtained. This result agrees well with the theoretic ratio of 1.5, lending support to the oxidation mechanism above. It was also postulated that lactate and ethanol would exhibit similar oxidation rates, which was further supported by the similar yield of H_2S (see below). Moreover, since the HCO_3^- in SRB system is the most important factor affecting the pH (Dvorak et al. 1992; Kousi et al. 2011), the use of ethanol as the carbon source resulted in a lower pH than that obtained with the use of lactate (Table 2). Different carbon sources lead to slight differences in pH in the reaction solution, the effects on Sb transformation are described in detail below (see Sect. 3.2).

The H_2S concentration fluctuated within the range of 85–175 mg L^{-1} (Fig. 3d). After the addition of Sb(V), the H_2S concentration decreased rapidly from 144 mg L^{-1} (day 45) to 107 mg L^{-1} (day 50) and then increased again to 146 mg L^{-1} (day 56). This result likely indicated that the initial addition of Sb(V) inhibited SRB activity, resulting in a reduction in H_2S yield. Subsequently, the SRB gradually adapted, and H_2S production began to rise. Zhang et al. (2016) also reported that the initial addition of Sb(V) temporarily inhibited the growth of SRB during Sb(V) wastewater treatment. In addition, some heavy metals (e.g., Cu(II) and Zn(II)) can temporarily inhibit SRB activity (Jong and Parry 2003; Kaksonen et al. 2003).

The effects of lactate and ethanol in maintaining SRB growth and producing H_2S were essentially the same. For example, when the influent pH was 7, the H_2S concentration was 143 ± 17 and 158 ± 14 mg L^{-1} when the carbon source was lactate (days 45–74) and ethanol (days 137–150), respectively. Similarly, Pagnanelli et al. (2012) found that when lactate and ethanol were used as carbon sources, the SRB-induced sulfate reduction efficiencies were similar, and the yields of H_2S were also close.

3.2 The transformation and precipitation of Sb

The Sb(V), Sb(III) and Sb(T) concentrations in the Sb(V) wastewater treatment experiment as a function of time are shown in Fig. 3e, f. On the first day (day 45) of Sb(V) treatment, the Sb(V) concentration was only 0.37 mg L^{-1} , indicating that Sb(V) was mostly removed at the very beginning of the treatment. The Sb(V) removal in this period could be predominantly attributed to adsorption on the carrier ceramsite and bacteria because the low Sb(III) concentration between days 45 and 56 (0.11–0.12 mg L^{-1}) indicated that the reduction of Sb(V) was weak. Between days 45 and 56, the Sb(V) concentration increased from 0.37 to 3.13 mg L^{-1} , indicating that the Sb(V) adsorption weakened, possibly because the maximum adsorption of Sb(V) could be reached in a short time (Dai et al. 2014; Lee et al. 2018).

Between days 56 and 64, the Sb(V) concentration in the effluent decreased from 3.13 to 1.55 mg L^{-1} , and the Sb(III) concentration increased from 0.11 to 1.11 mg L^{-1} (Fig. 3e). This result indicated that the reduction of Sb(V) occurred and resulted in a decrease in Sb(V). To identify the causes for the reduction of Sb(V), a batch experiment without the addition of sulfate in the medium was carried out for 9 days. When sulfate was absent and H_2S was not produced, the Sb(V) in the culture was not consumed, indicating that the Sb(V) was not reduced by SRB enzymatically. Instead, the presence of elemental sulfur (S^0) in the precipitates (see Sect. 3.4) indicated the reduction of Sb(V) by H_2S .

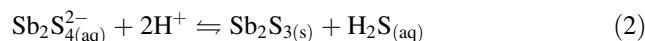
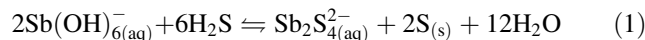
As mentioned above, the Sb(V) reduction was weak between days 45 and 56 but was significantly enhanced between days 56 and 64. Considering that the H_2S concentrations in these two periods (131 ± 18 and 142 ± 11 mg L^{-1} , respectively) were similar while the pH decreased continuously after day 56 (Fig. 3c), the enhanced Sb(V) reduction between days 56 and 64 was possibly caused by the decrease in pH. In a study on the Sb(V) behavior in an anaerobic environment containing H_2S , Polack et al. (2009) proposed that a decline in pH promoted the reduction of Sb(V).

Between days 64 and 93, the Sb(T) concentration (2.65–1.44 mg L^{-1} , Fig. 3f) was substantially lower than the initial Sb concentration in the influent (5 mg L^{-1}), indicating that a fraction of the aqueous Sb was removed in this period. The aqueous Sb was proposed to be predominantly removed through precipitation as Sb_2S_3 because the sequential chemical extraction of the precipitates showed that Sb in the precipitate was mainly (> 91%) present as sulfides, and the SEM analysis verified the presence of Sb_2S_3 in the precipitates (see Sect. 3.4). The Sb(III) concentration between days 64 and 93 remained relatively stable, likely indicating that Sb(III) was formed by

Sb(V) reduction at a rate comparable to that of the consumption of Sb(III) by Sb_2S_3 precipitation. After day 93 (pH < 7.3) the aqueous Sb(V) was almost completely reduced and hence the decrease in aqueous Sb(III) could only be caused by Sb_2S_3 precipitation. Therefore, the continuous decrease in Sb(III) after day 93 due to the further decline in pH indicated that the decrease in pH also enhanced Sb_2S_3 precipitation. On day 181 (pH 6.5), the Sb(III) concentration decreased to 0.15 mg L^{-1} (Fig. 3e), corresponding to a 96% removal of Sb(T). This concentration is half the pollution emission standard for the antimony industry (0.3 mg L^{-1}) (GB30770-2014).

The above results showed that, after Sb(V) reduction, the product Sb(III) could transform between soluble forms and Sb_2S_3 precipitates in response to a pH change. At a relatively high pH, Sb(III) may be primarily present as Sb(III)-S(-II) complexes (e.g., SbS_2^- and $\text{Sb}_2\text{S}_4^{2-}$) in solutions with a high H_2S concentration (Krupp 1988; Filella et al. 2002b; Planer-Friedrich and Wilson 2012; Olsen et al. 2018). Planer-Friedrich and Scheinost (2011) reported that in some hot springs in Yellowstone National Park in the United States, up to 40% of the Sb was present as Sb(III)-S(-II) complexes when the H_2S concentration was less than 6 mg L^{-1} . At a relatively low pH, however, these complexes are unstable and dissociate, forming Sb_2S_3 precipitates (Spycher and Reed 1989; Helz et al. 2002). During Sb(V) treatment, aqueous Sb(III) might be mostly present as Sb(III)-S(-II) complexes because the H_2S concentration was at a high level of $85\text{--}175 \text{ mg L}^{-1}$. These

complexes were relatively stable at pH > 7.3 (before day 93), dissociated and formed Sb_2S_3 precipitates when the pH decreased to < 7.3 (after day 93) and were thoroughly transformed to Sb_2S_3 precipitates when the pH further decreased to 6.5 (day 181). In general, the transformation of Sb was proposed to occur as follows:



The Sb(V) and Sb(III) concentrations between days 56 and 198 were combined into one dataset to simulate the general trend in Sb transformation with declining pH. Because Sb(V) was greatly affected by adsorption between days 45 and 56 (pH > 8.1), the data from this period were not included. With declining pH, Sb(V) reduction and Sb_2S_3 precipitation significantly increased, and Sb(III) (i.e., Sb(III)-S(-II) complexes) initially increased as a result of Sb(V) reduction and then decreased as a result of Sb_2S_3 precipitation (Fig. 4). Similarly, As removal in a biological sulfate-reducing system is also greatly enhanced when pH decreases (Rodriguez-Freire et al. 2014).

3.3 Leaching of Sb in the precipitates

After Sb(V) wastewater treatment, the precipitates in the reactor were leached by an H_2S -containing solution to further clarify the transformation between aqueous Sb(III) and Sb_2S_3 precipitates in the H_2S system. The variations in

Fig. 4 Transformation of Sb with declining pH in Sb(V) wastewater treatment (H_2S : $85\text{--}175 \text{ mg L}^{-1}$; Sb(V) in the influent solution: 5 mg L^{-1} . Note: The Sb_2S_3 included a small amount of adsorbed Sb.)

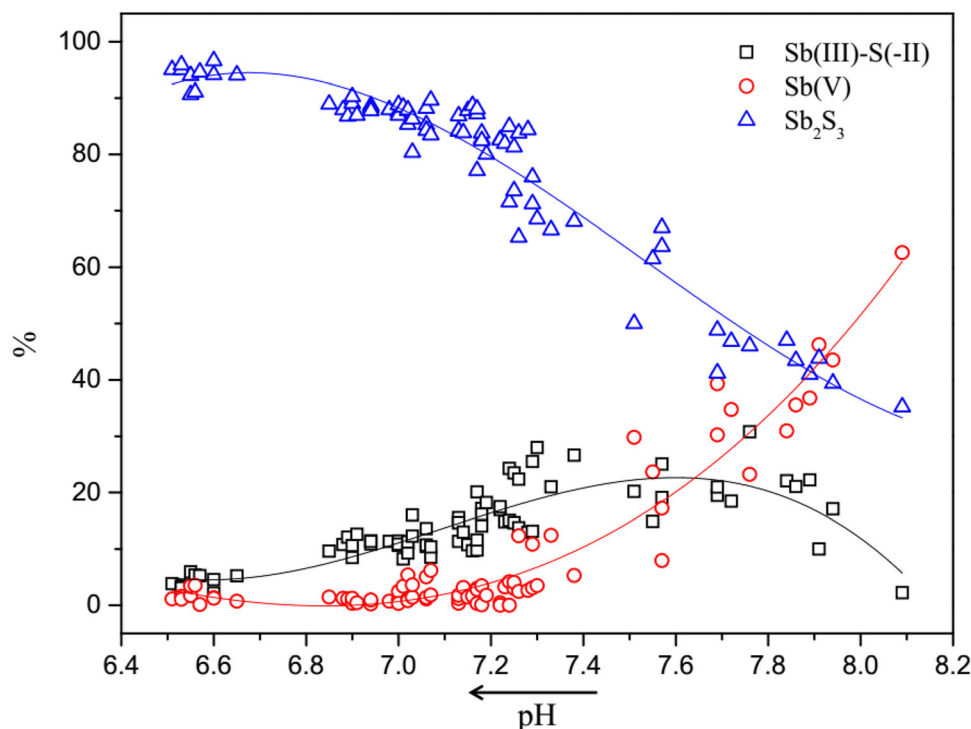
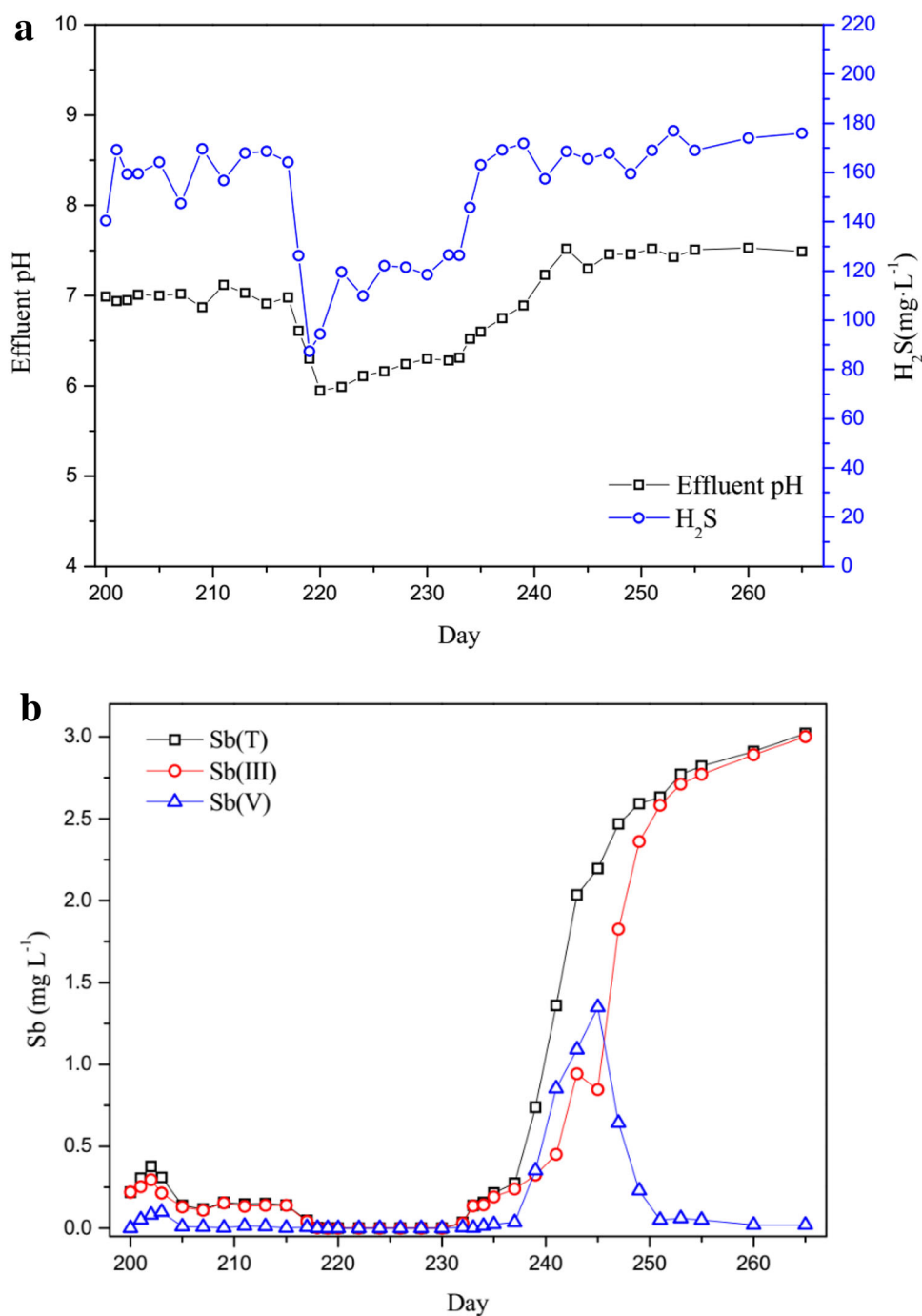


Fig. 5 Variations in the parameters of the effluent in precipitate leaching experiments [a pH and H₂S concentration; b Sb(V), Sb(III), and Sb(T) concentrations]



pH and the H₂S, Sb(V) and Sb(III) concentrations in the effluent are shown in Fig. 5. When the influent was neutral (pH 7) between days 200 and 217, the effluent pH ranged between 6.9 and 7.1, while the Sb leaching was slight, with Sb(V) and Sb(III) concentrations of < 0.10 and < 0.22 mg L⁻¹, respectively. When the influent was acidic (pH 3) between days 218 and 232, the effluent pH was 5.9–6.3, while Sb was not leached.

When the influent was alkaline between days 233 and 265, however, the effluent pH gradually increased from 6.6

to 7.5, and a large amount of Sb(V) and Sb(III) were leached (Fig. 5b). The Sb(V) concentration in the effluent increased after day 233 and reached 1.35 mg L⁻¹ on day 245. Since Sb(V) and Sb(III) were absent in the influent solution, the increase in Sb(V) in the effluent might be caused by the pH-induced desorption of the Sb(V) that accumulated in the solid phases in the reactor due to Sb(V) adsorption at the beginning (especially between days 45 and 56) of the Sb(V) treatment experiment. Previous studies have confirmed that a rise in pH favors the

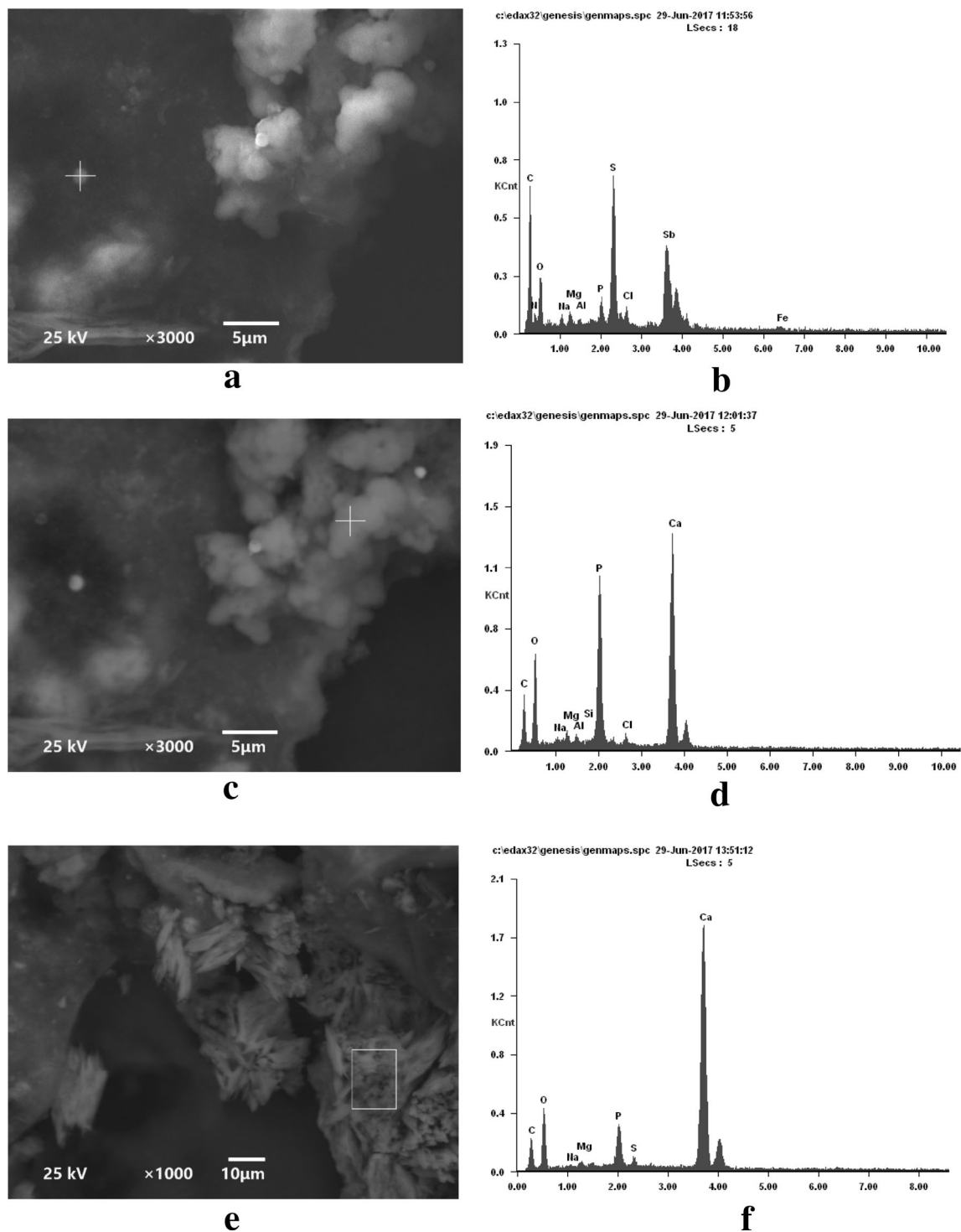


Fig. 6 SEM images and EDS spectra of precipitates (**a, b** image and composition of dot-like precipitates; **c, d** image and composition of amorphous precipitates; and **e, f** image and composition of crystalline precipitates)

desorption of Sb(V) (Guo et al. 2009; Dai et al. 2014). This finding indicated that the previously adsorbed Sb(V) had not been reduced despite being exposed to a high level of H_2S ($> 80 \text{ mg L}^{-1}$) for more than 175 days. Similarly, in a

study on the removal of As using biochemical reactors, Jackson et al. (2013) found that As(V) in the sand at the bottom of the reactor was not reduced after 104 days of operation. In a previous study on the adsorption of As, it

was proposed that As was complexed with active groups carried by bacteria and then adsorbed (Maeda et al. 1985, Taran et al. 2013). Therefore, similar complexation and adsorption of Sb(V) may have occurred and made Sb(V) reduction difficult. After day 245, the Sb(V) concentration in the effluent decreased rapidly, and almost no Sb(V) was detected on day 251, possibly because all of the previously adsorbed Sb(V) had been leached.

The Sb(III) concentration in the effluent increased continuously after the influent pH was adjusted to alkaline after day 233 and reached 2.89 mg L^{-1} on day 265 (Fig. 5b). Because Sb(III) desorption was unlikely to have increased to a very high extent due to the variations in pH (Guo et al. 2009), the strong leaching of Sb(III) could be primarily attributed to the dissolution of precipitated Sb_2S_3 instead of the release of previously adsorbed Sb(III). The strong dissolution of Sb_2S_3 after day 233 possibly indicated strong complexation between Sb_2S_3 and aqueous H_2S due to the rise in pH. As mentioned above, in the Sb(V) wastewater treatment, the dissolved Sb(III) [mainly occurring as Sb(III)-S(-II) complexes] was almost completely transformed into Sb_2S_3 precipitates when the pH decreased to 6.5 (Fig. 3c, e). Therefore, we proposed that an opposite reaction occurred in the leaching experiment after day 233. When the pH of the solution rose to approximately 6.5 (day 234, Fig. 5a), the Sb_2S_3 precipitates likely dissolved due to the formation of Sb(III)-S(-II) complexes with H_2S [reverse of reaction (2)]. As in minerals also exhibits similar behavior. For example, under alkaline and anaerobic conditions, the presence of

sulfide can cause the dissolution of As_2S_3 and the release of As(III) (Floroiu et al. 2004). Moreover, when enargite was leached with sulfide, the As in the mineral could be dissolved by forming complexes with sulfide under alkaline conditions (Balaz et al. 2000). Furthermore, under alkaline conditions, the As and Sb in tetrahedrite can be complexed by sulfide and form AsS_4^{3-} , SbS_3^{3-} , SbS_4^{3-} , etc. (Awe et al. 2010).

3.4 Characterization of the precipitates

SEM images showed that the treatment of Sb(V) wastewater resulted in amorphous, crystalline, and some dot-like precipitates (Fig. 6). EDS analysis showed that the dot-like precipitates were composed of Sb, S, C, O, Ca, P, Cl, Mg, Fe, and K, with Sb and S as the dominant components (Fig. 6b). The mass compositions (Sb: 14.4%; S: 5.9%) determined by EDS corresponded to a molar ratio of Sb to S of approximately 2:3. This finding indicated that the Sb, when removed from the wastewater, primarily precipitated as Sb_2S_3 . The components coexisting with Sb_2S_3 might originate from the SRB growth medium. The amorphous and crystalline precipitates were predominantly composed of C, O, P, Ca, Mg, Na, etc. (Fig. 6c, e), indicating that these precipitates likely included bacterial cells and minerals.

XRD analysis (Fig. 7) showed the occurrence of stibnite (Sb_2S_3), S^0 , calcite (CaCO_3), dolomite ($\text{CaMg}(\text{CO}_3)_2$), and quartz (SiO_2) in the precipitates. The S^0 in the precipitate might have been formed in the reduction of Sb(V) by H_2S , in which H_2S is oxidized to S^0 . Quartz might originate

Fig. 7 XRD spectrum of precipitates (qu: quartz, do: dolomite, st: stibnite, s: sulfur, ca: calcite, si: siderite)

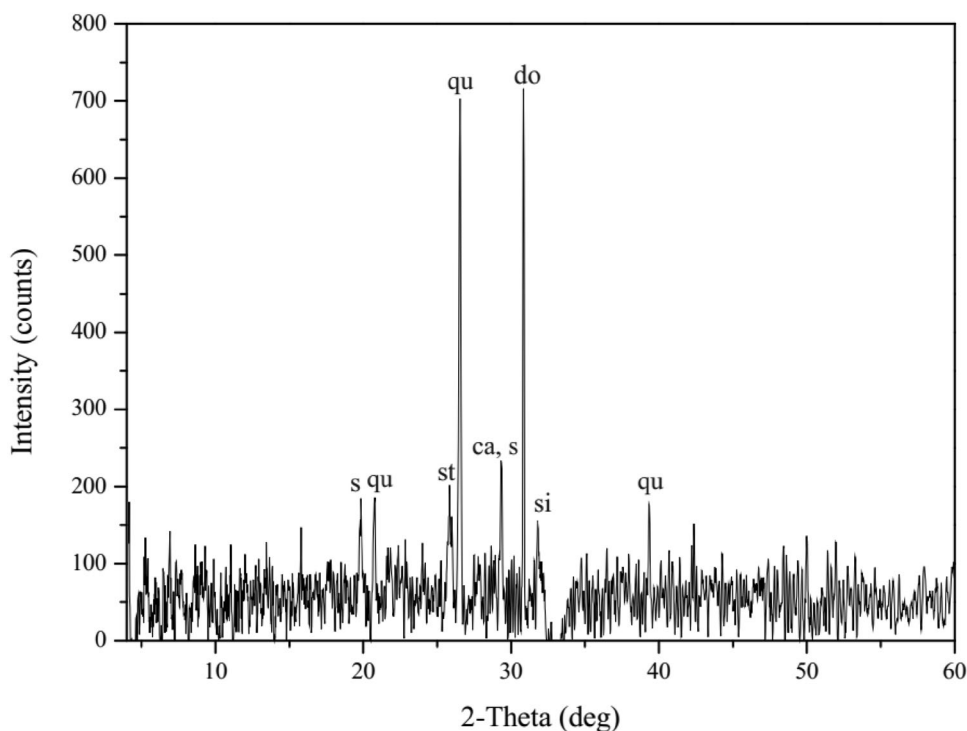
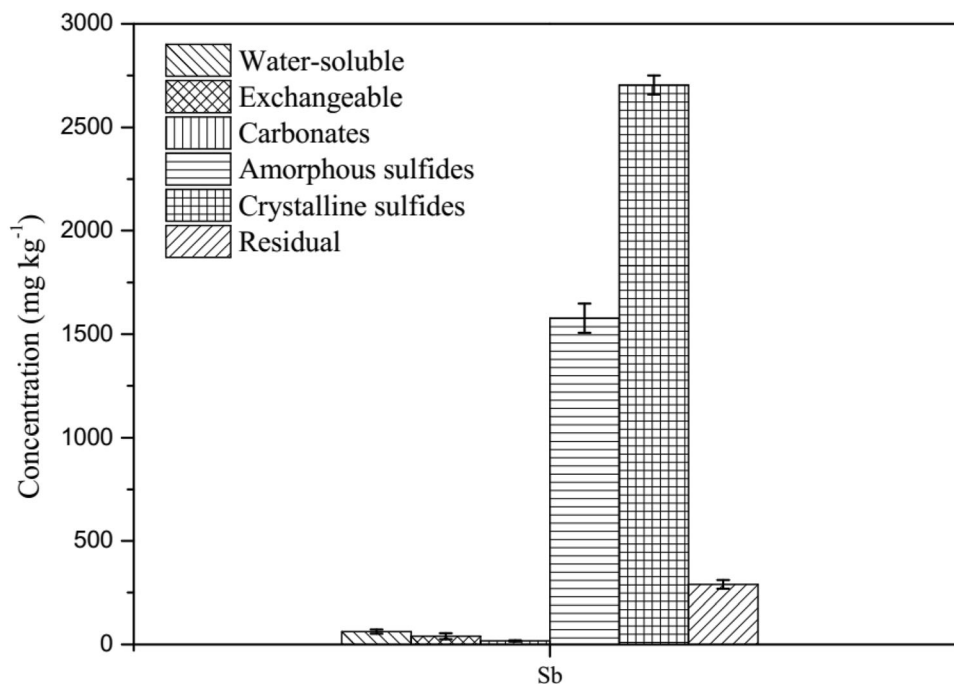


Fig. 8 Distribution of Sb bound to solid phases in the precipitates



from the water filtration material on the bottom of the reactor. Calcite and dolomite might have been formed by the reaction of Ca and Mg with HCO_3^- .

The sequential chemical extraction showed that up to 91.3% of the Sb in the precipitates was present as sulfides (Fig. 8). This result confirmed that Sb was primarily precipitated as Sb_2S_3 after its removal from the wastewater. Water-soluble and exchangeable Sb only accounted for 2.2% of the total Sb. These two phases corresponded to adsorbed Sb, indicating that adsorption had only a minor contribution to Sb removal compared with the precipitation of Sb_2S_3 .

4 Conclusions

In the treatment of Sb(V) wastewater by SRB, a sharp change in the pH of the influent solution (3–9) had little effect on the bacteria in a continuous flow reactor, but a small change in the pH of the reaction solution (6.58–7.96) would have significant effects on the Sb transformation. This study demonstrates that the dissociation of Sb(III)-S(-II) complexes would result in the precipitation of Sb as Sb_2S_3 , while the formation of these complexes would not only inhibit the precipitation of Sb but also result in the dissolution of Sb_2S_3 . These processes were highly pH dependent, and the pH value associated with the transformation of Sb species was quantified. Sb(V) was almost completely reduced when the pH decreased to

approximately 7.3, and aqueous Sb (mostly Sb(III)-S(-II) complexes) was thoroughly precipitated as Sb_2S_3 when the pH decreased to approximately 6.5. The newly formed Sb_2S_3 was stable at a relatively low pH but began to dissolve through complexation with H_2S when the pH rose to approximately 6.5. To increase Sb removal in practice, it is important to control the pH at a relatively low level.

Compared with lactate, the use of ethanol as the carbon source could not only reduce costs but also favor Sb removal because ethanol resulted in a comparable H_2S concentration but a lower pH.

Because anaerobic bacteria were used in the treatment, it is necessary to maintain an anaerobic condition and monitor the growth of anaerobic bacteria regularly in practical application.

Acknowledgements This study was financially supported by the China National Natural Science Foundation (No. U1612442) and the China National Key Research and Development Program (No. 2017YFD0801000).

References

- Alvarez MT, Crespo C, Mattiasson B (2007) Precipitation of Zn(II), Cu(II) and Pb(II) at bench-scale using biogenic hydrogen sulfide from the utilization of volatile fatty acids. *Chemosphere* 66(9):1677–1683
- APHA (1998) Standard methods for the examination of water and wastewater, twentieth edn. A.P.H. Association, Washington, DC

- Awe SA, Samuelsson C, Sandstrom A (2010) Dissolution kinetics of tetraedrite mineral in alkaline sulphide media. *Hydrometallurgy* 103(1–4):167–172
- Balaz P, Achimovicova M, Bastl Z, Ohtani T, Sanchez M (2000) Influence of mechanical activation on the alkaline leaching of enargite concentrate. *Hydrometallurgy* 54(2–3):205–216
- Dai C, Zhou Z, Zhou X, Zhang Y (2014) Removal of Sb(III) and Sb(V) from aqueous solutions using nZVI. *Water Air Soil Pollut* 225:1799. <https://doi.org/10.1007/s11270-013-1799-3>
- Dvorak DH, Hedin RS, Edenborn HM, McIntire PE (1992) Treatment of metal-contaminated water using bacterial sulfate reduction: results from pilot-scale reactors. *Biotechnol Bioeng* 40(5):609–616
- Filella M, Belzile N, Chen YW (2002a) Antimony in the environment: a review focused on natural waters I. Occurrence. *Earth-Sci Rev* 57(1–2):125–176
- Filella M, Belzile N, Chen YW (2002b) Antimony in the environment: a review focused on natural waters II. Relevant solution chemistry. *Earth-Sci Rev* 59(1–4):265–285
- Filella M, Philippo S, Belzile N, Chen Y, Quentel F (2009) Natural attenuation processes applying to antimony: a study in the abandoned antimony mine in Goesdorf, Luxembourg. *Sci Total Environ* 407(24):6205–6216
- Floroiu RM, Davis AP, Torrents A (2004) Kinetics and mechanism of $As_2S_3(am)$ dissolution under N_2 . *Environ Sci Technol* 38(4):1031–1037
- Flynn HC, Meharg AA, Bowyer PK, Paton GI (2003) Antimony bioavailability in mine soils. *Environ Pollut* 124(1):93–100
- Fu Z, Zhang G, Li H, Chen J, Liu F, Wu Q (2016) Influence of reducing conditions on the release of antimony and arsenic from a tailings sediment. *J Soils Sediments* 16(10):2471–2481
- Fuentes E, Pinochet H, De Gregori I, Potin-Gautier M (2003) Redox speciation analysis of antimony in soil extracts by hydride generation atomic fluorescence spectrometry. *Spectrochim Acta Part B Atom Spectrosc* 58(7):1279–1289
- GB30770-2014, Emission standards of pollutants for stannum, antimony and mercury Industries, China
- Greenberg AE, Clesceri LS, Eaton AD (1992) Standard methods for the examination of water and wastewater, 18th edn. A.P.H. Association, Washington, DC
- Guo X, Wu Z, He M (2009) Removal of antimony(V) and antimony(III) from drinking water by coagulation-flocculation-sedimentation (CFS). *Water Res* 43(17):4327–4335
- Guo W, Fu Z, Wang H, Song F, Wu F, Giesy JP (2018) Environmental geochemical and spatial/temporal behavior of total and speciation of antimony in typical contaminated aquatic environment from Xikuangshan, China. *Microchem J* 137:181–189
- He M (2007) Distribution and phytoavailability of antimony at an antimony mining and smelting area, Hunan, China. *Environ Geochem Health* 29(3):209–219
- He M, Wang X, Wu F, Fu Z (2012) Antimony pollution in China. *Sci Total Environ* 421:41–50
- Helz GR, Valerio MS, Capps NE (2002) Antimony speciation in alkaline sulfide solutions: role of zerovalent sulfur. *Environ Sci Technol* 36(5):943–948
- Jackson CK, Koch I, Reimer KJ (2013) Mechanisms of dissolved arsenic removal by biochemical reactors: a bench- and field-scale study. *Appl Geochem* 29:174–181
- Jong T, Parry DL (2003) Removal of sulfate and heavy metals by sulfate reducing bacteria in short-term bench scale upflow anaerobic packed bed reactor runs. *Water Res* 37(14):3379–3389
- Kaksonen AH, Riekkola-Vanhanen ML, Puhakka JA (2003) Optimization of metal sulphide precipitation in fluidized-bed treatment of acidic wastewater. *Water Res* 37(2):255–266
- Kaksonen AH, Lavonen L, Kuusenaho M, Kolli A, Närhi H, Vestola E, Puhakka JA, Tuovinen OH (2011) Bioleaching and recovery of metals from final slag waste of the copper smelting industry. *Miner Eng* 24(11):1113–1121
- Kang M, Kamei T, Magara Y (2003) Comparing polyaluminum chloride and ferric chloride for antimony removal. *Water Res* 37(17):4171–4179
- Kieu HTQ, Mueller E, Horn H (2011) Heavy metal removal in anaerobic semi-continuous stirred tank reactors by a consortium of sulfate-reducing bacteria. *Water Res* 45(13):3863–3870
- Kousi P, Remoundaki E, Hatzikioseyan A, Battaglia-Brunet F, Joulain C, Kousteni V, Tsezos M (2011) Metal precipitation in an ethanol-fed, fixed-bed sulphate-reducing bioreactor. *J Hazard Mater* 189(3):677–684
- Krupp RE (1988) Solubility of stibnite in hydrogen-sulfide solutions, speciation, and equilibrium-constants, from 25 to 350°C. *Geochim Cosmochim Acta* 52(12):3005–3015
- Lee S, Tanaka M, Takahashi Y, Kim K (2018) Enhanced adsorption of arsenate and antimonate by calcined Mg/Al layered double hydroxide: investigation of comparative adsorption mechanism by surface characterization. *Chemosphere* 211:903–911
- Liu F, Zhang G, Liu S, Fu Z, Chen J, Ma C (2018) Bioremoval of arsenic and antimony from wastewater by a mixed culture of sulfate-reducing bacteria using lactate and ethanol as carbon sources. *Int Biodeter Biodegr* 126:152–159
- Maeda S, Nakashima S, Takeshita T, Higashi S (1985) Bioaccumulation of arsenic by fresh-water algae and the application to the removal of inorganic arsenic from an aqueous phase. 2. By *Chlorella-vulgaris* isolated from arsenic-polluted environment. *Sep Sci Technol* 20(2-3):153–161
- Mariussen E, Ljones M, Stromseng AE (2012) Use of sorbents for purification of lead, copper and antimony in runoff water from small arms shooting ranges. *J Hazard Mater* 243:95–104
- Olsen NJ, Mountain BW, Seward TM (2018) Antimony(III) sulfide complexes in aqueous solutions at 30°C: a solubility and XAS study. *Chem Geol* 476:233–247
- Pagnanelli F, Viggì CC, Cibati A, Uccelletti D, Toro L, Palleschi C (2012) Biotreatment of Cr(VI) contaminated waters by sulphate reducing bacteria fed with ethanol. *J Hazard Mater* 199–200:186–192
- Planer-Friedrich B, Scheinost AC (2011) Formation and structural characterization of thioantimony species and their natural occurrence in geothermal waters. *Environ Sci Technol* 45(16):6855–6863
- Planer-Friedrich B, Wilson N (2012) The stability of tetrathioantimonate in the presence of oxygen, light, high temperature and arsenic. *Chem Geol* 322:1–10
- Polack R, Chen YW, Belzile N (2009) Behaviour of Sb(V) in the presence of dissolved sulfide under controlled anoxic aqueous conditions. *Chem Geol* 262(3–4):179–185
- Postgate JR (1984) *The sulfate-reducing bacteria*, 2nd edn. Cambridge University Press, Cambridge
- Rodriguez-Freire L, Sierra-Alvarez R, Root R, Chorover J, Field JA (2014) Biomineralization of arsenate to arsenic sulfides is greatly enhanced at mildly acidic conditions. *Water Res* 66:242–253
- SFS (1996) SFS-EN ISO 9963-1: Water quality. Determination of alkalinity. Part 1: determination of total and composite alkalinity. Finnish Standards Association (SFS)
- Spycher NF, Reed MH (1989) As(III) and Sb(III) sulfide complexes: an evaluation of stoichiometry and stability from existing experimental data. *Geochim Cosmochim Acta* 53(9):2185–2194
- Taran M, Safari M, Monaza A, Reza JZ, Bakhtiyari S (2013) Optimal conditions for the biological removal of arsenic by a novel halophilic archaea in different conditions and its process optimization. *Pol J Chem Technol* 15(2):7–9

- Tessier A, Campbell PGC, Bisson M (1979) Sequential extraction procedure for the speciation of particulate trace-metals. *Anal Chem* 51(7):844–851
- Wakao N, Takahashi T, Sakurai Y, Shiota H (1979) Treatment of acid mine water using sulfate-reducing bacteria. *J Fermentation Technol* 57(5):445–452
- Wang H, Chen F, Mu S, Zhang D, Pan X, Lee DJ, Chang JS (2013) Removal of antimony (Sb(V)) from Sb mine drainage: biological sulfate reduction and sulfide oxidation-precipitation. *Bioresour Technol* 146:799–802
- Wilson SC, Lockwood PV, Ashley PM, Tighe M (2010) The chemistry and behaviour of antimony in the soil environment with comparisons to arsenic: a critical review. *Environ Pollut* 158(5):1169–1181
- Wu F, Fu Z, Liu B, Mo C, Chen B, Corns W, Liao H (2011) Health risk associated with dietary co-exposure to high levels of antimony and arsenic in the world's largest antimony mine area. *Sci Total Environ* 409(18):3344–3351
- Zhang M, Wang H (2013) Simultaneous removal of copper, zinc, and sulfate from coal mine waste in a laboratory SRB bioreactor using lactate or ethanol as carbon sources. *Miner Water Environ* 32(4):314–320
- Zhang H, Sun B, Zhao X, Gao Z (2008) Effect of ferric chloride on fouling in membrane bioreactor. *Sep Purif Technol* 63(2):341–347
- Zhang G, Ouyang X, Li H, Fu Z, Chen J (2016) Bioremoval of antimony from contaminated waters by a mixed batch culture of sulfate-reducing bacteria. *Int Biodeter Biodegr* 115:148–155